



[mambaby.com](https://mambaby.com)

# Online Shop

English

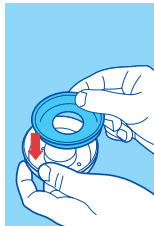
# Bottles & Bottle Accessories

## Easy Start Anti-Colic

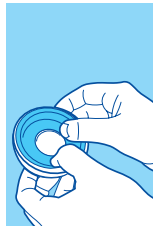
This product meets the requirements of European Standard EN 14350.

### Instruction for use:

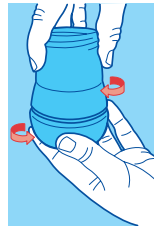
- Clean before first and each subsequent use.
- Before first use separate all 6 parts and place them in boiling water for 5 minutes. This is to ensure hygiene.
- Check all components before each use and throw away at the first signs of damage or weakness.
- To ensure proper cleaning/sterilising all bottle parts **MUST** be disassembled.
- Cleaning/sterilising while assembled can damage the bottle.
- Dishwasher safe on top dishwasher rack (max. 65° C / 149 F) but food colourings may discolour components
- Do not use abrasive cleaning agents. Only soft bristle brushes or soft sponges should be used. Hard scourers may scratch the plastic.
- Sterilising using one of the following methods: steam sterilising (electric or microwave according to manufacturer's instructions), boiling in water for at least 5 minutes or immersing in a liquid sterilising solution.
- Do not leave items standing in any cleaning solution for longer than recommended – this could negatively affect the product function.
- The bottle is made of polypropylene which is hygienic, easy to clean and relatively soft. Avoid any heavy pressure on it, as this could affect the function.
- Do not use pin or sharp object to enlarge feeding hole of teat.
- When first used and sometimes during use, the ventilation slit (in the raised bubble on the underside of the teat base) can stick together. This will prevent air from entering the bottle during feeding and as a result, cause the teat to collapse. Slowly brush over the bubble (ventilation) a few times with your thumb or fingers to re-open the slit.
- Ensure valve is assembled correctly and the base of the bottle is firmly attached prior to filling bottle with liquid (see figure 1, 2 & 3).
- Do not let babies self-feed.
- Store teats and valves in a dry sealed container.
- Do not leave single bottle parts in direct sunlight or heat.
- Always use only MAM teats with the MAM bottles.
- Use only sugar free food or liquids.
- To avoid injury, do not let baby walk with bottle.
- Do not put your baby to bed with bottle. Prolonged contact with liquids may cause severe tooth decay.
- Bottle teat fits all MAM wide neck bottles and the Trainer.



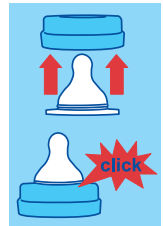
**1**  
Place white silicone valve into bottom ring.



**2**  
Press down on raised perimeter of silicone valve.



**3**  
Screw assembled base onto bottom of bottle in slow steady manner.



**4**  
Insert teat into top of bottle screw ring until you hear a "click".

